



## *Install Password Self Help from the Web*

---

This document will guide you through the process of installing or upgrading the DetectIT Password Self Help software on your System i.

For more detailed information on upgrading or installing DetectIT Password Self Help, please review the **Self Help Reference Manual** which is available on the Product CD or included in the web download of the product.

### **Software Installation/Upgrade on System i**

#### **System i**

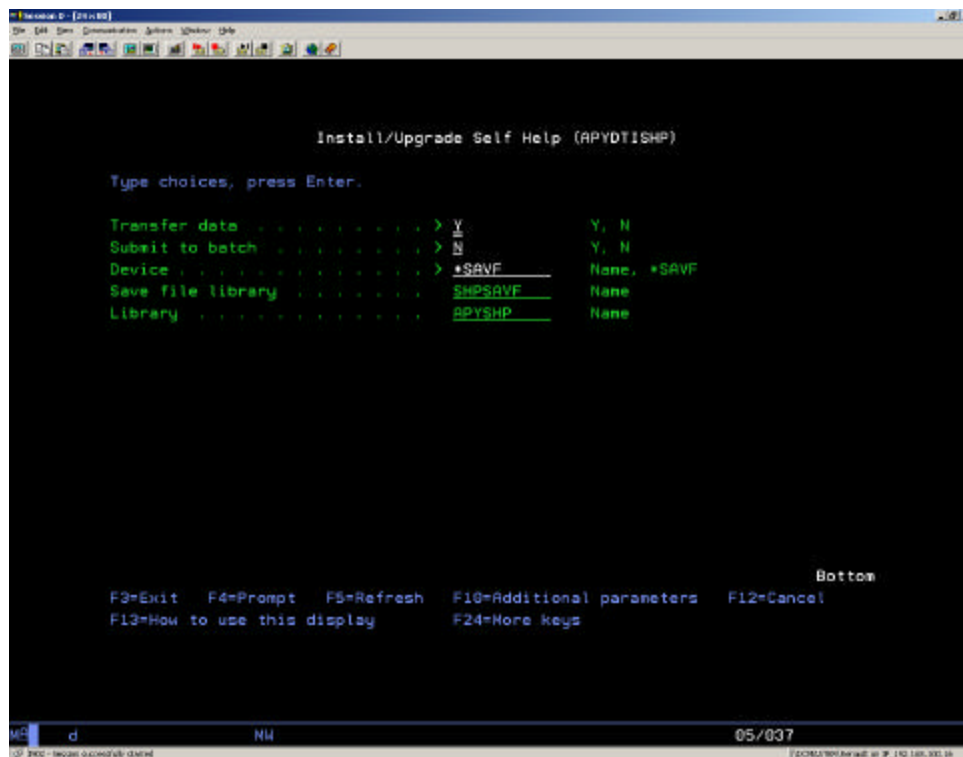
1. Signon with QSECOFR
2. CRTSAVF QGPL/SELFHELP

#### **PC**

1. Download SHPSAVF zip file
2. Unzip SHPSAVF and save to pc
3. Open command window
4. FTP <System i >
5. Sign on with QSECOFR
6. Change to binary mode using the BIN command
7. put <pathname>\SHPSAVF QGPL/SELFHELP
8. Wait until the transfer has finished

## System i

1. Sign on with QSECOFR
2. RSTLIB SAVLIB(SHPSAVF) DEV(\*SAVF) SAVF(QGPL/SELFHELP)  
MBROPT(\*ALL) ALWOBJDIF(\*ALL)
3. RSTOBJ OBJ(\*ALL) SAVLIB(SHPTEST) DEV(\*SAVF) SAVF(SHPSAVF/SHPTEST)  
RSTLIB(QTEMP)
4. Enter: QTEMP/APYDTISHP command to install Self Help and run with  
following details



\*\*\* Please refer to the **Self Help Reference Manual** for information about configuring and using Password Self Help. \*\*\*